

# Brew Group Exchange Program

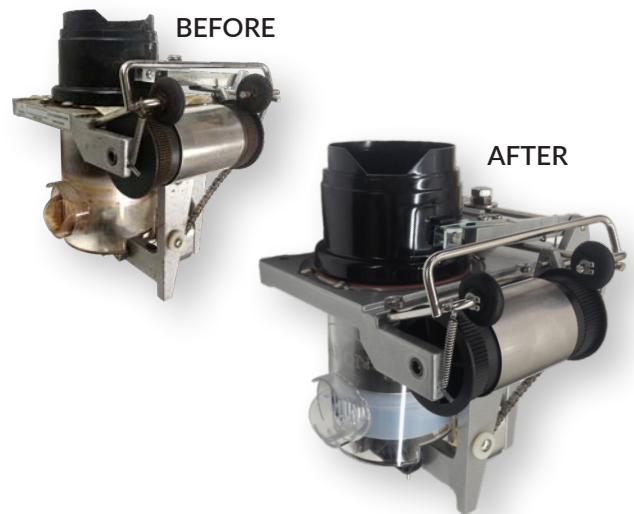
A brew group needs to be rebuilt after 25,000 cycles, which is about once a year.

The brew group is the heart of the equipment and is responsible for the taste of every cup. It needs to be serviced regularly to guarantee the quality of the beverages served.

This program ensures a constant running of the machine by receiving a replacement brew group to use while maintenance is performed on the actual brew group of the unit.

## How It Works

- Betson replaces your brew group with a factory refurbished one.
- The refurbished brew group will be invoiced at retail cost and credited upon return of your brew group.
- For your convenience, a prepaid shipping label is included with the replacement brew group.
- Return the replacement brew group within 15 days to receive credit.



## This program includes:

- One-year warranty on the brew group.
- Complete cleaning and sanitizing.
- Testing and inspection.
- Replacement of specific parts.

Reference Parts	
99BRE52R	Cylinder
99BRE55R	Screen & Seal
98BRE39-P	Piston Seal
96HAR107	O-Rings (4)
96HAR103	Spring Pins (3)
98BRE58	Pressure Springs - H-Frames (2)
96HAR100	Retaining Rings 3/16 (2)
06BRE04	Tape Advance Wheels (2)
98BRE28	Cam Follower
01BRE59	Spring Plates (2)



## Contact Betson

Customer Service Department  
800-524-2343, option #2  
parts@betson.com

# How to Return Your Brew Group

## Reusing Cafection Packaging

It is important to verify that the **bottom** of the box is **well closed and taped**. Make sure it is not damaged or wet.

Put the brew group on the foam protective bag **respecting its shape** and put the other foam bag on top. If the foam bag does not fit on the brew group, change its position.

Shake the box well to make sure that the bags keep the brew group **tight and safe**. Nothing is supposed to move inside the box.

**Tape** the top of the box.

Package **only one brew group per box**.



**Bottom**



**Top**

If you need more information, contact our Technical Support team:

**800-561-6162, ext. 310**  
**service@cafection.evocagroup.com**